

Learning Management System Required Settings

To ensure optimal performance when accessing the FIS Learning Management System (LMS), specific settings are required.

This document outlines:

- Display Settings
- Internet Settings
 - Trusted Sites
 - Enable Downloads
 - Display Mixed Content
- Turn Off Pop-up Blockers
- Compatibility View Settings

Display Settings

We recommend a minimum screen resolution setting of 1024 x 768. To set your screen resolution:

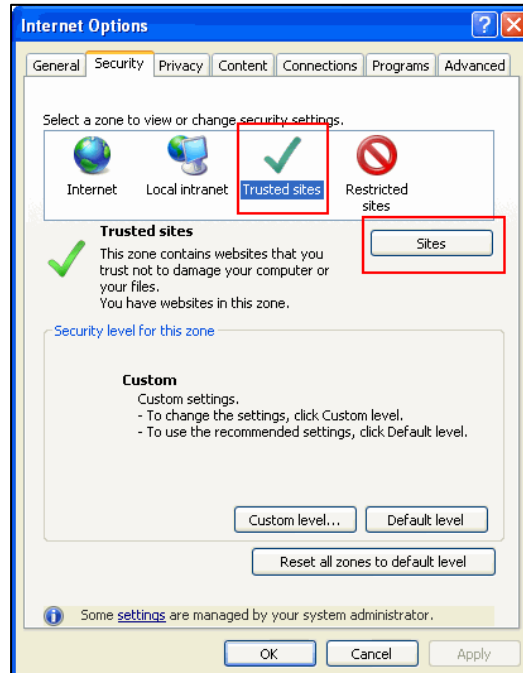
1. Right click on your desktop.
2. Select Properties, the Display Properties window appears.
3. Select the Settings tab.
4. In the Screen resolution section, move the slider bar to 1024x768.
5. Click OK.

Internet Settings

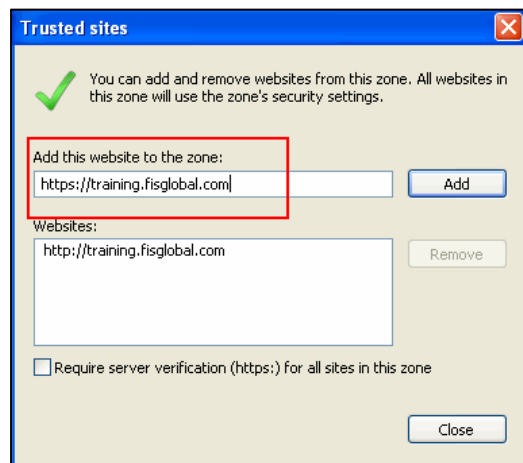
The following Internet Settings are required for downloading and viewing information on the LMS.

Trusted Sites

1. In your Internet browser, select Tools>Internet Options>Security>Trusted Sites.



2. Click Sites. The Trusted Sites window appears.

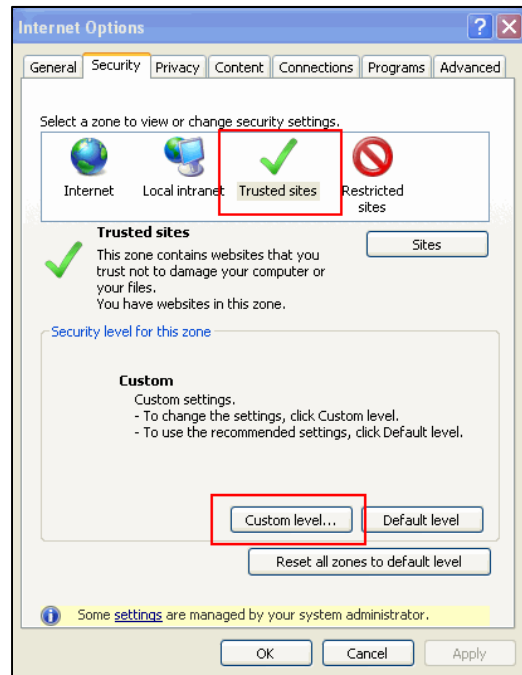


3. In the Add this website to the zone field, enter <https://training.fisglobal.com> and click Add.
4. Click Close.

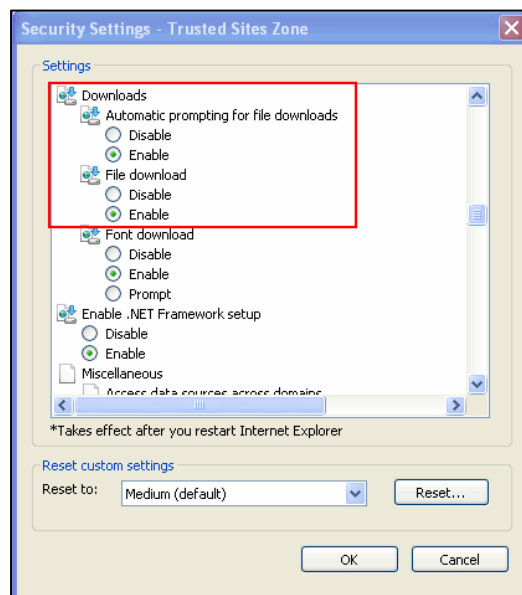
If you have any questions, please contact your Training Representative listed in the LMS Contact Us page at: <https://training.fisglobal.com/TPOnline/TPOnline.dll/Contact Us>

Enable Downloads

Settings for both Security Zones, Trusted Sites and Internet, must be synchronized to enable downloads.



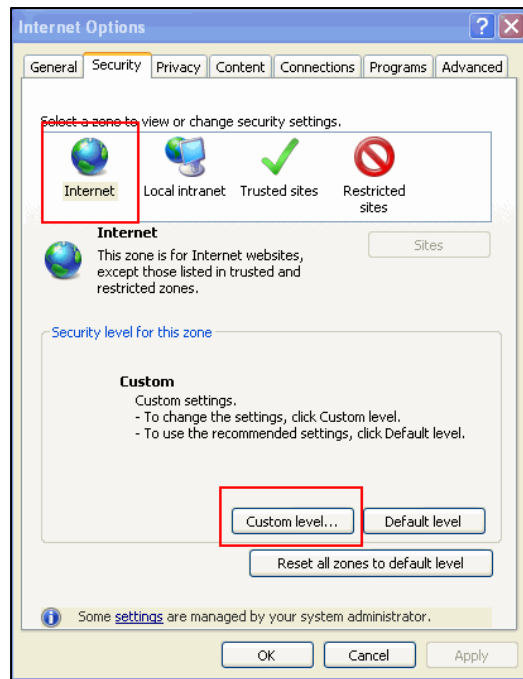
1. In your Internet browser, select Tools>Internet Options>Security>Trusted Sites.
2. Click Custom Level. The Security Settings Trusted Site Zone Settings page appears:



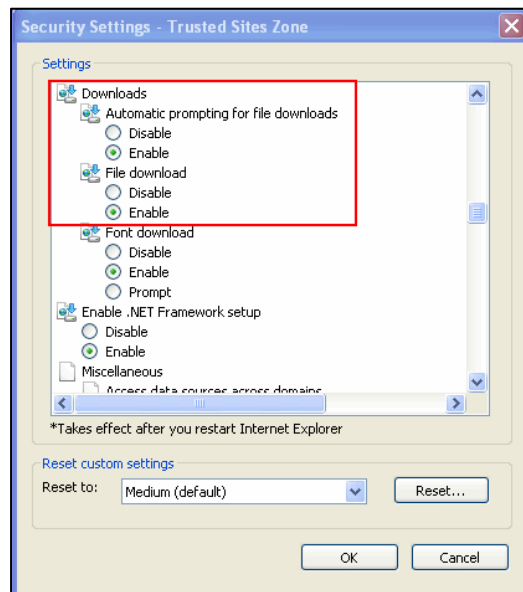
3. Scroll down to Downloads and select Enable Automatic Prompting for File Downloads and Enable File Download.

If you have any questions, please contact your Training Representative listed in the LMS Contact Us page at: <https://training.fisglobal.com/TPOnline/TPOnline.dll/Contact Us>

- Click OK to close the Trusted Sites zone.



- Select the Internet Zone.
- Click Custom Level. The Security Settings window appears.

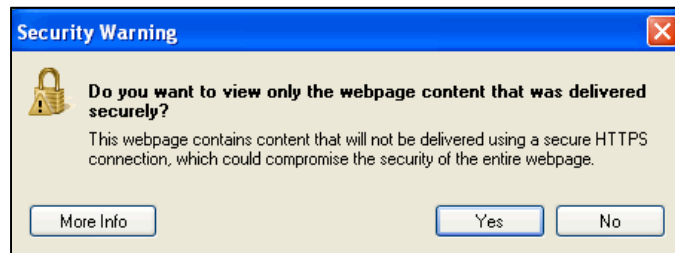


- Scroll down to Downloads and select Enable Automatic Prompting for File Download and Enable File Download.
- Click OK to close the Internet zone.

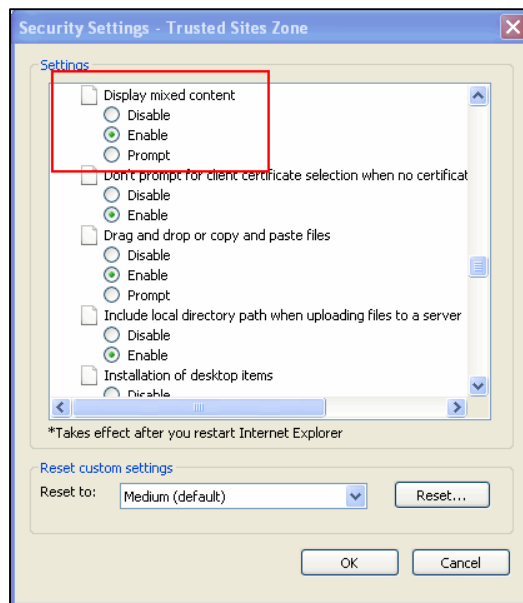
If you have any questions, please contact your Training Representative listed in the LMS Contact Us page at: <https://training.fisglobal.com/TPOnline/TPOnline.dll/Contact Us>

Display mixed content

If you receive the following Security Warning when accessing the LMS, Update your Settings to Enable Display mixed content.



1. In your Internet browser, select Tools>Internet Options>Security>Trusted Sites.
2. Click Custom Level.

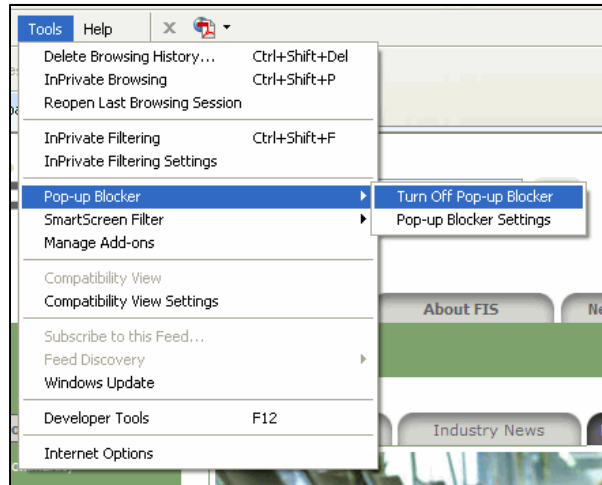


3. Scroll down to the miscellaneous category and select Enable Display mixed content.

If you have any questions, please contact your Training Representative listed in the LMS Contact Us page at: <https://training.fisglobal.com/TPOnline/TPOnline.dll/Contact Us>

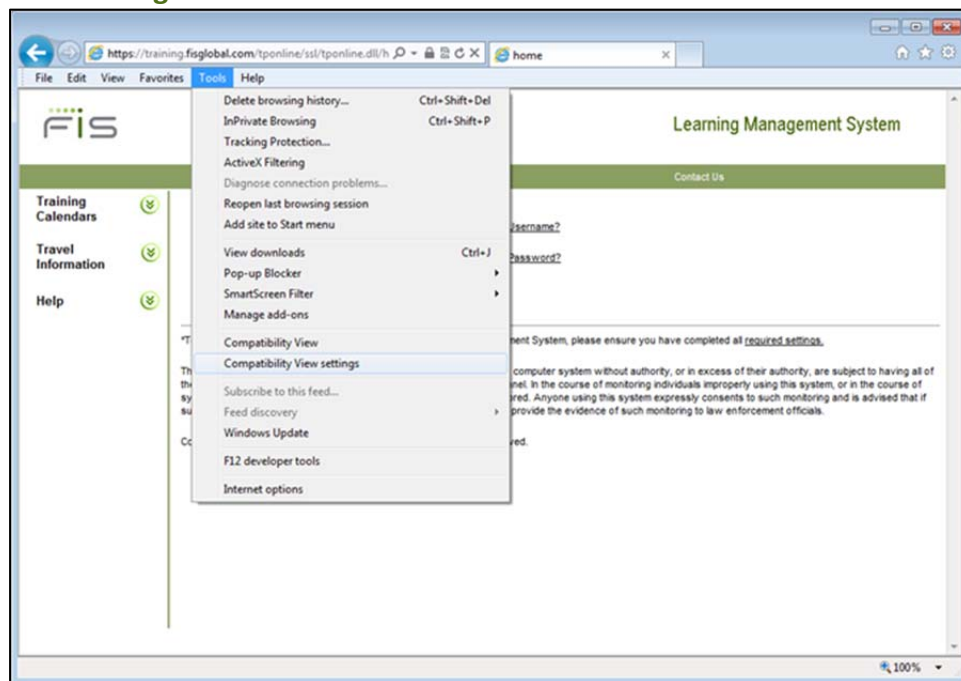
Turn Off Pop-up Blockers

1. In your Internet browser, select Tools>Pop-up Blocker.
2. Select Turn Off Pop-up Blocker.



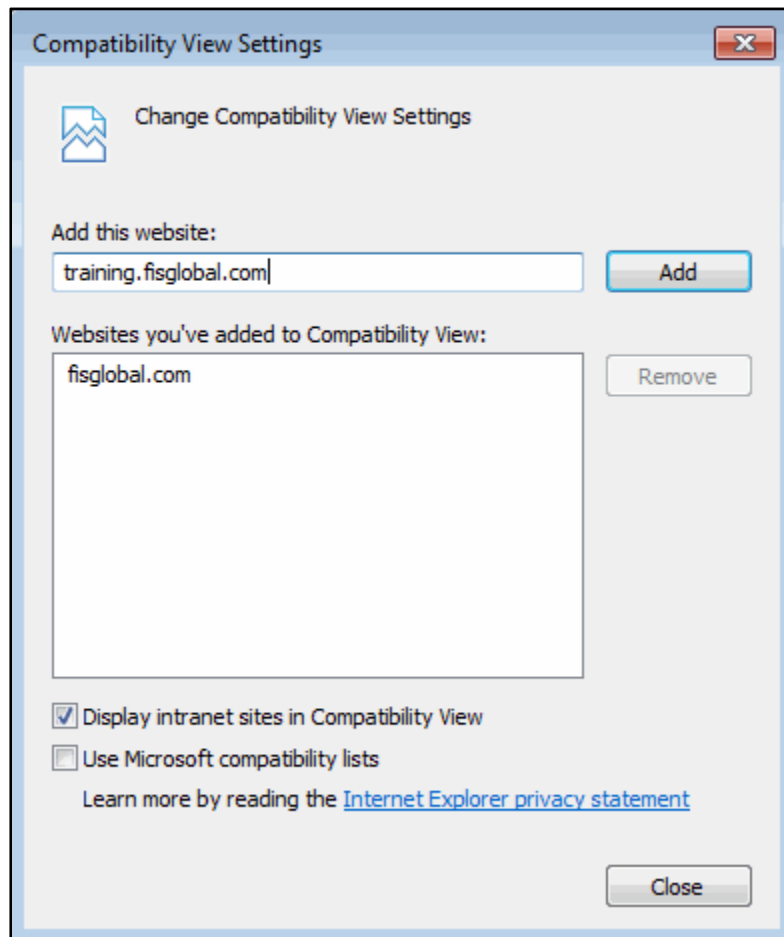
3. If you have additional toolbars (Google, MSN, Yahoo, etc.) or security software, ensure all Pop-up Blockers are disabled.

Compatibility View Settings



1. In your Internet browser, select Tools>Compatibility View Settings.

If you have any questions, please contact your Training Representative listed in the LMS Contact Us page at: <https://training.fisglobal.com/TPOnline/TPOnline.dll/Contact Us>



2. Type in “training.fisglobal.com” and click Add. The FIS site will appear in the box.
3. Click Close.